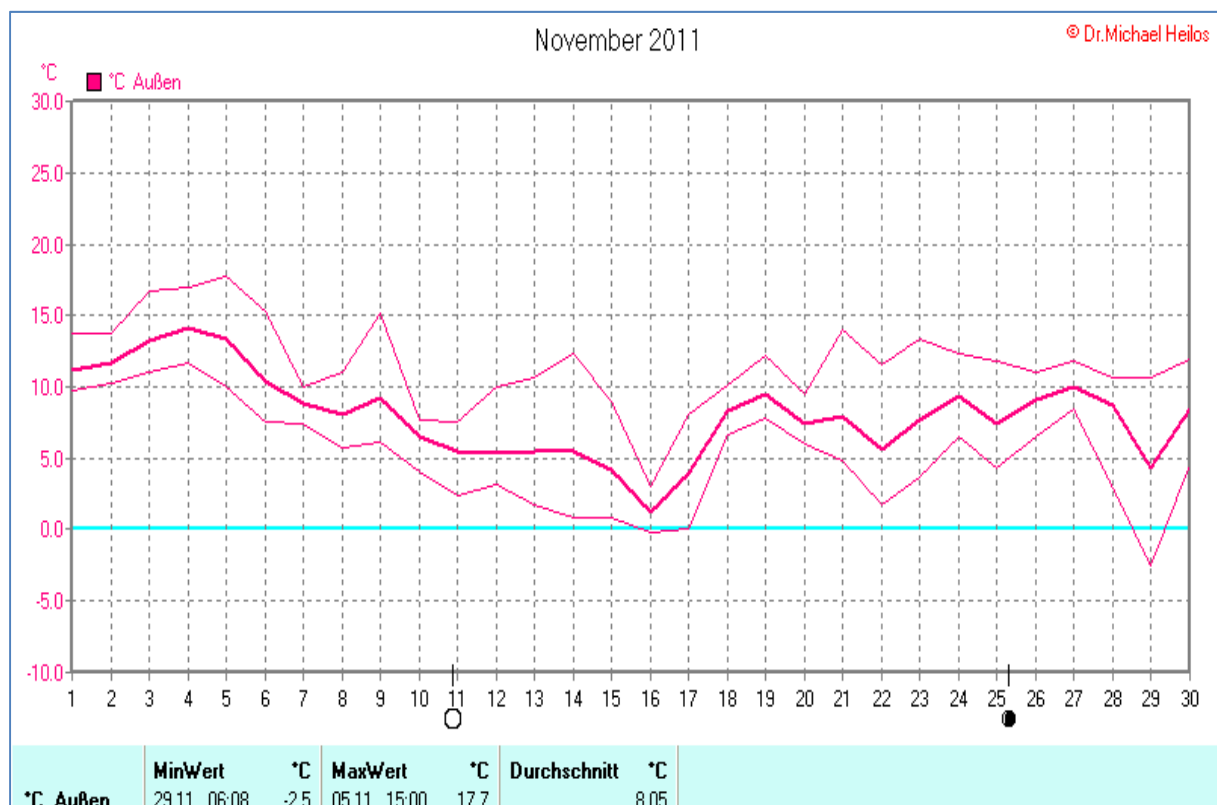
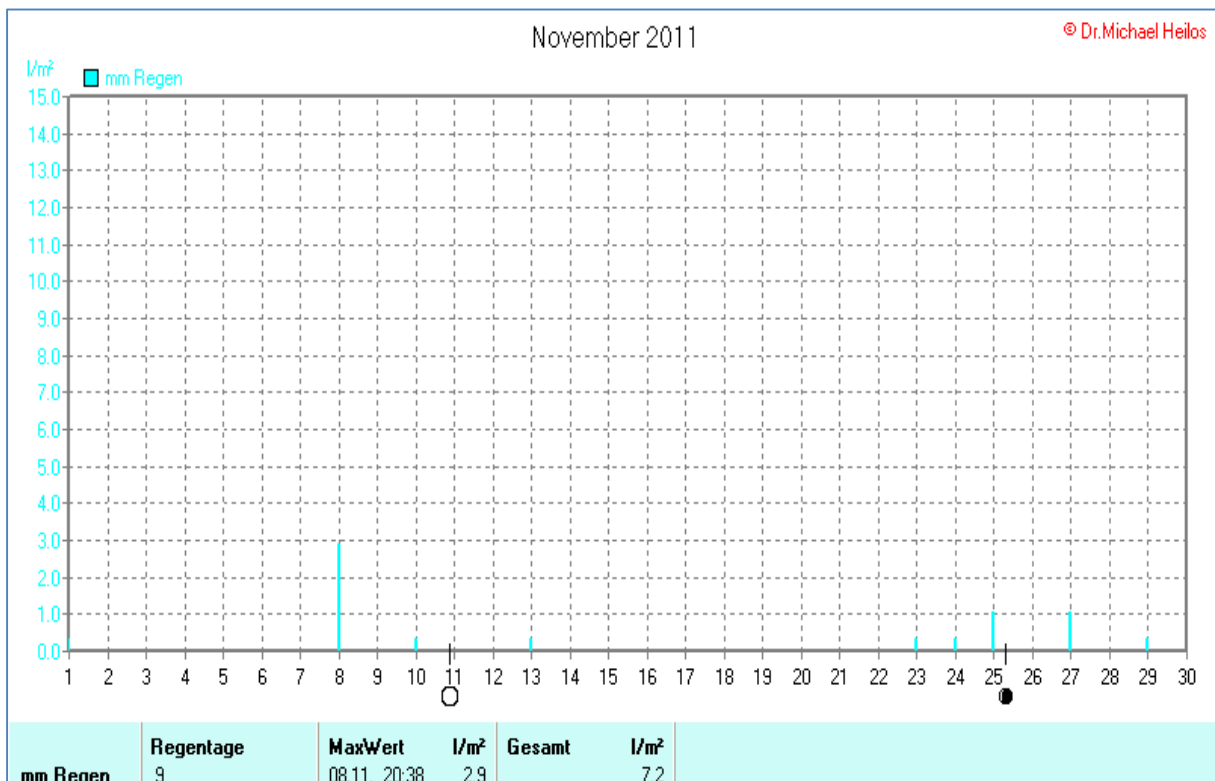
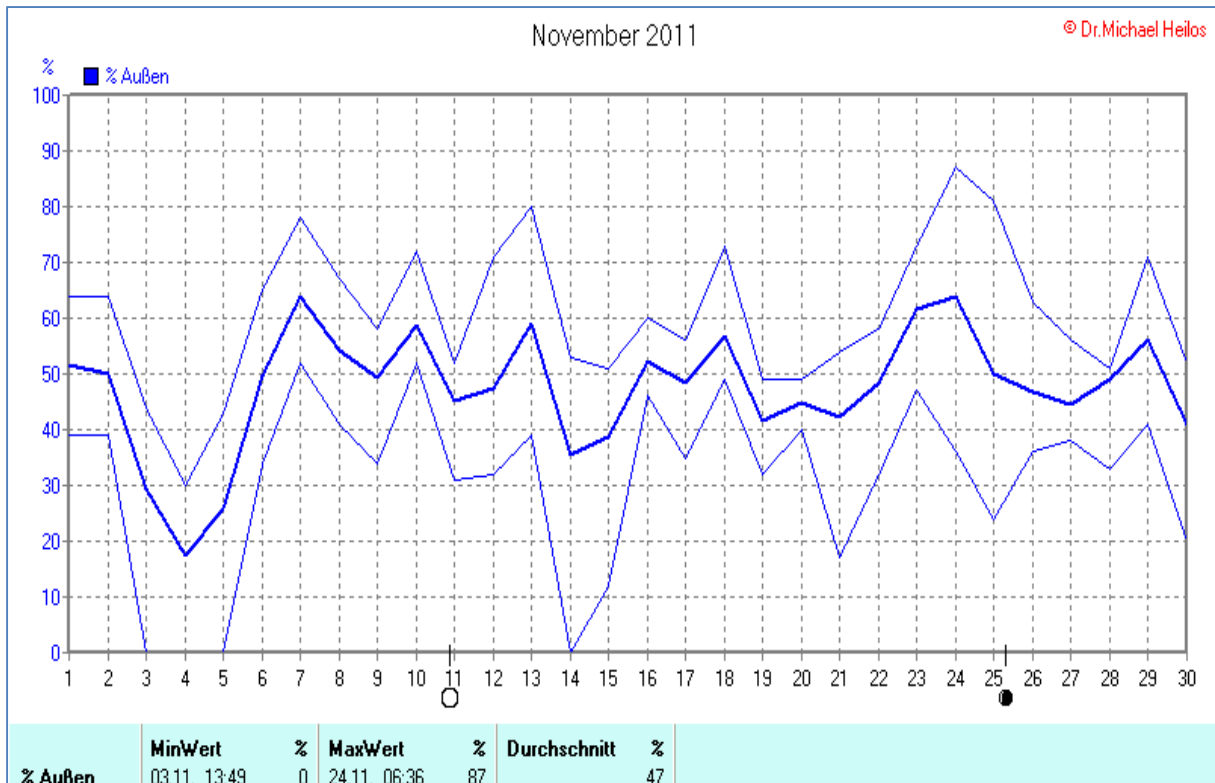
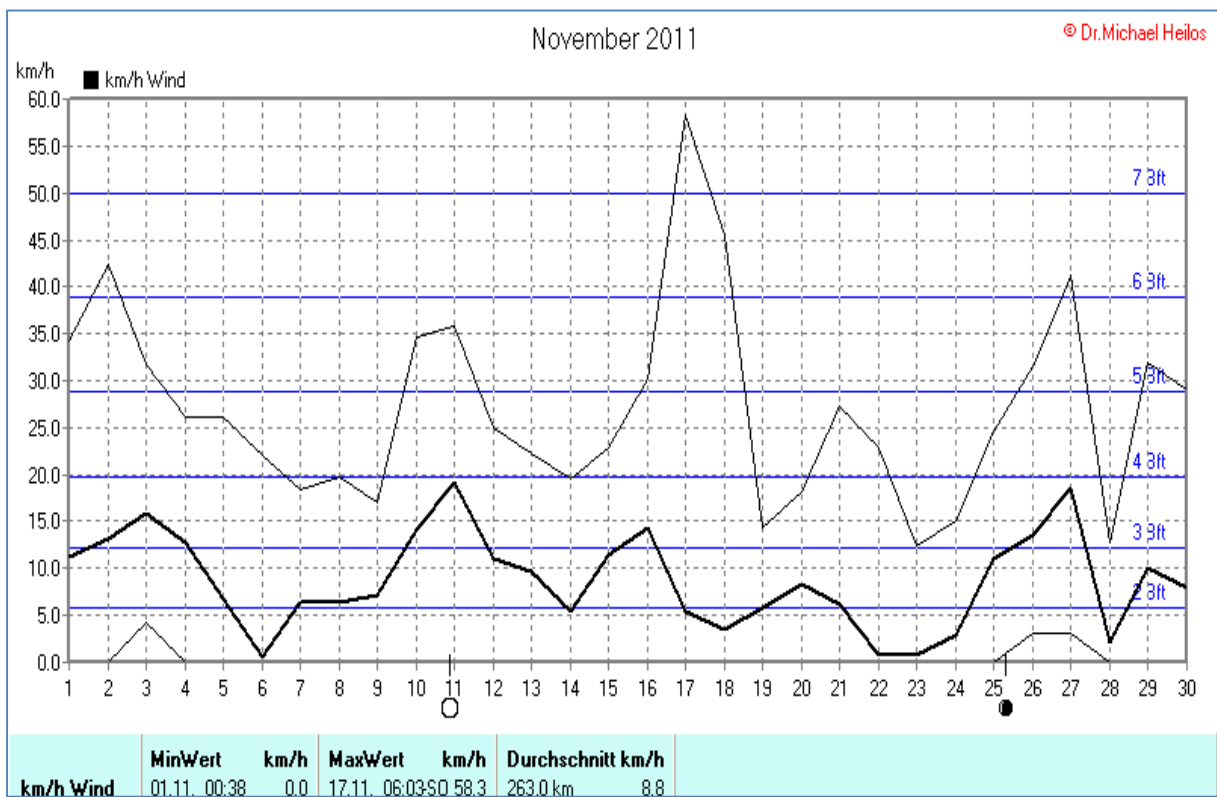
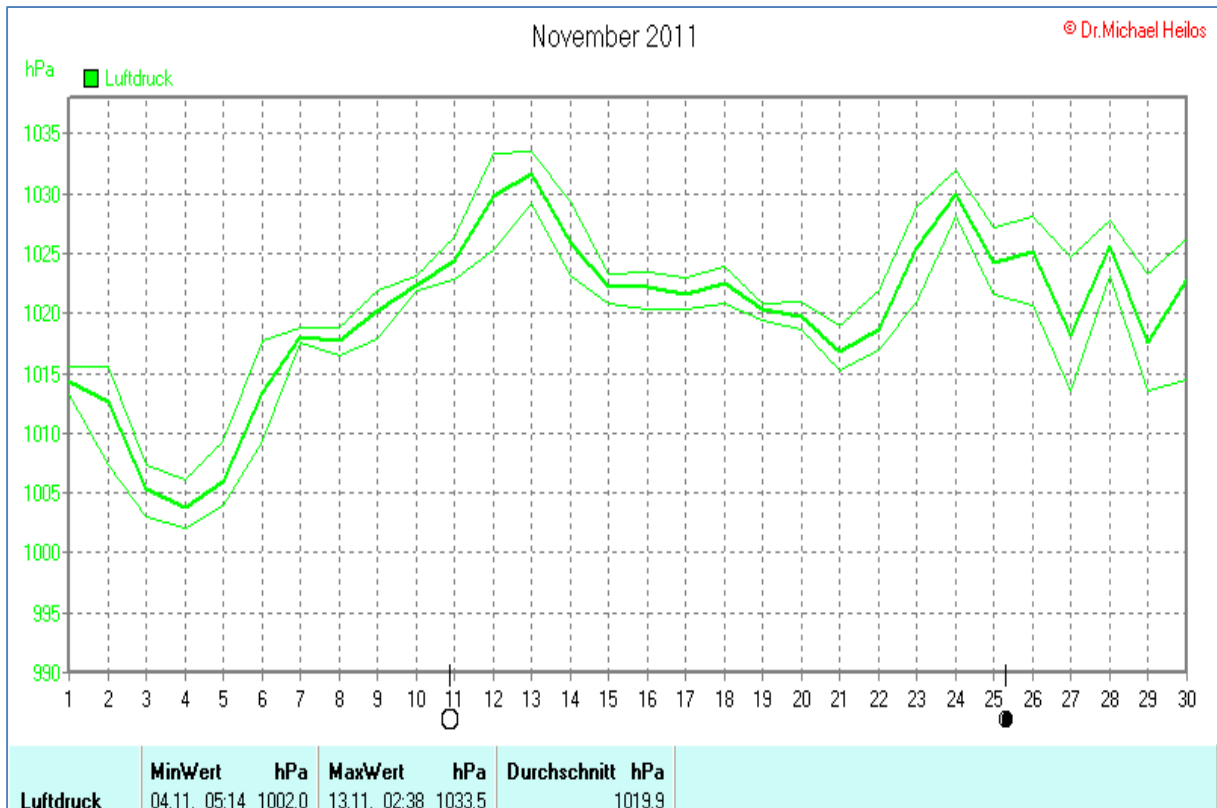


Wettertabelle und Grafiken November 2011 Station Borchsen

Wetterdaten November 2011 Station Borchsen						
© Dr.Michael Heilos						
Meßgröße	Minimum	Datum	Maximum	Zeit	Datum	Durchschnitt
Temperatur	-2,5 °C	29.11.2011	17,7 °C	15:00	05.11.2011	8,0 °C
Luftfeuchte	0%	03.11.2011	87%	06:36	24.11.2011	47%
Luftdruck	1002,0 hPa	04.11.2011	1033,5 hPa	02:38	13.11.2011	1019,9 hPa
Wind km/h			58,3 km/h	06:03	17.11.2011	8,8 km/h
Wind °			O-SO	06:03	17.11.2011	SO
Regen mm			2,9 l/m ²	20:38	08.11.2011	#7,200 l/m ²
Sonne h			1,67 h	16:18	17.11.2011	#46:54 h

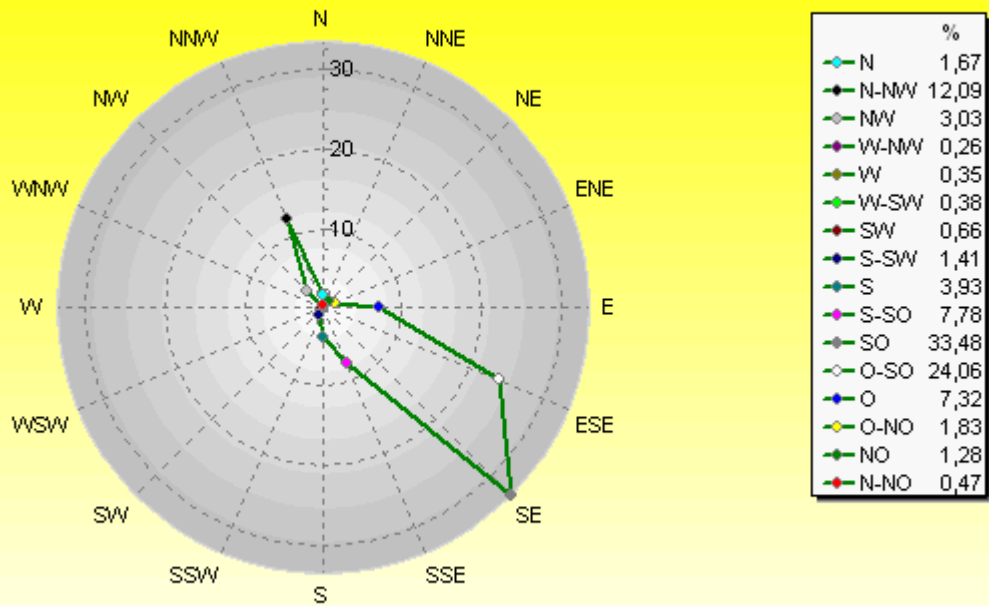






Verteilung Windrichtung November 2011

Borchen, Kreis Paderborn

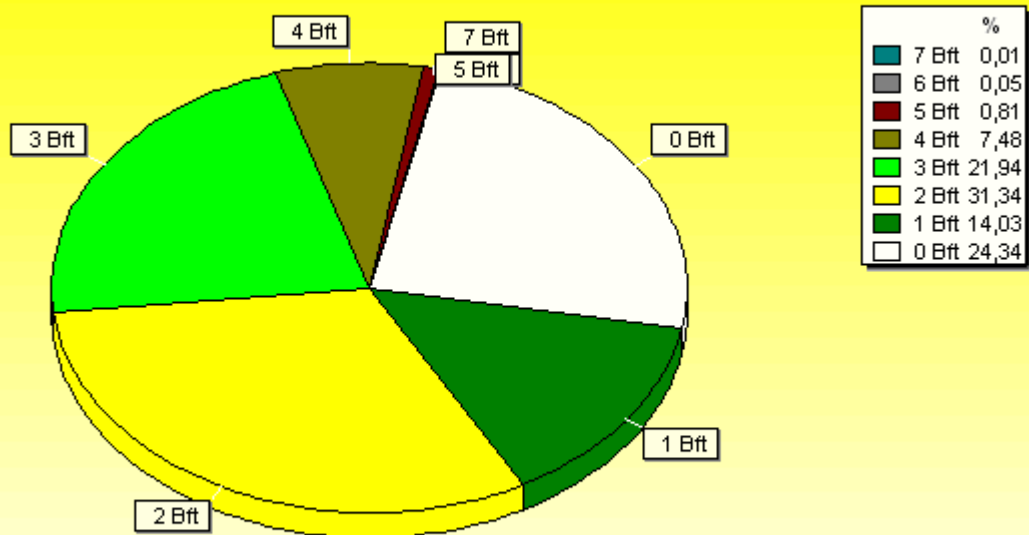


6542 / 2105 Werte -> 24,3% Windstille - Ø 8,8km/h - Max. 58,3km/h - 6312,0 km

© WzWin32 - © Dr.Michael Heilos - Borchen

Verteilung Windstärke November 2011

Borchen, Kreis Paderborn



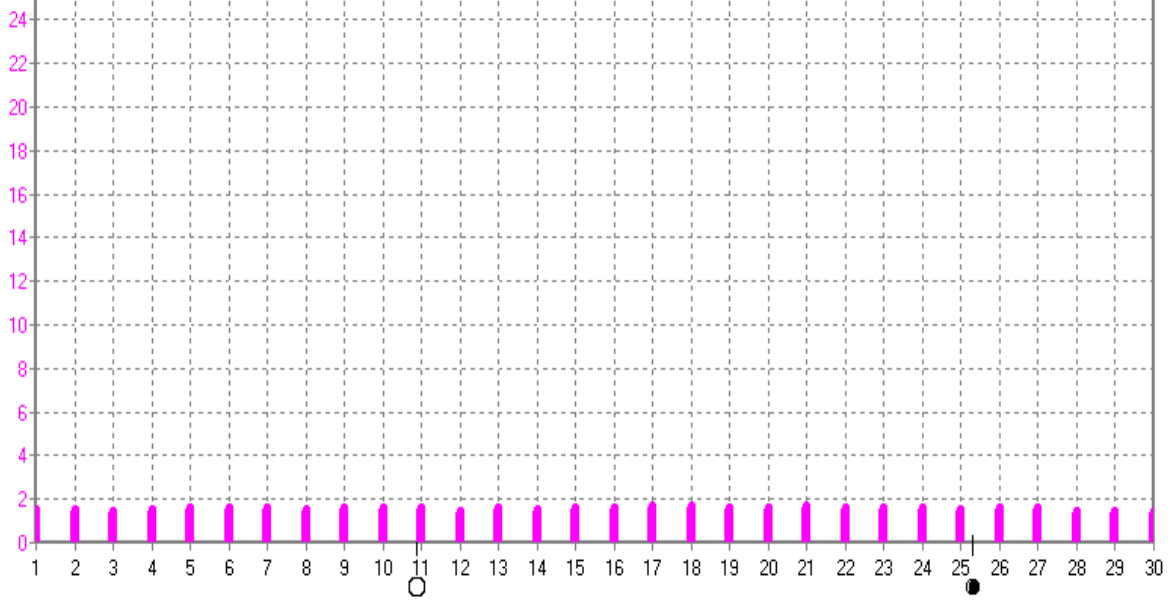
8647 Werte - Ø 8,8km/h - Max. 58,3km/h - 6312,0 km

© WzWin32 - © Dr.Michael Heilos - Borchen

November 2011

© Dr. Michael Heilos

h ■ h Sonnensch.



h Sonnensch.

MaxWert	h	Durchschnitt	h
17.11	16:18	1.67	46:54 h
			2